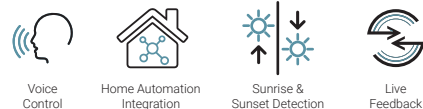
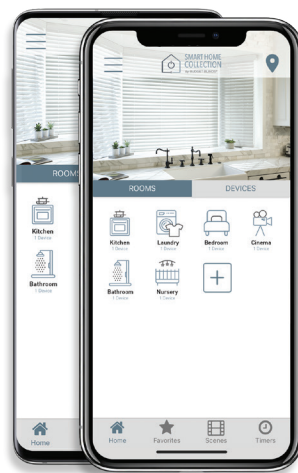


[budgetblinds.com](http://budgetblinds.com)



## ROOMS

Group SHC shades by room and conveniently control them accordingly.



## SCENES

Personalize shade control and organize how your shades operate by specific daily events.



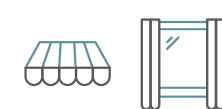
## TIMERS

Set and forget. Lower, raise and activate shade scenes automatically at the optimal time.



## MULTIPLE SHADE TYPES

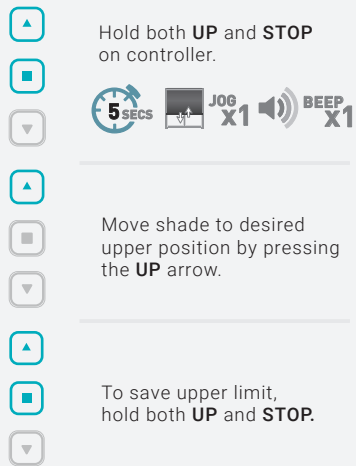
Awnings, Roller shades, External shades, Cellular ... Control every shade type from one screen.



## Quick Programming Guide



## 5. Adjust Upper Limit

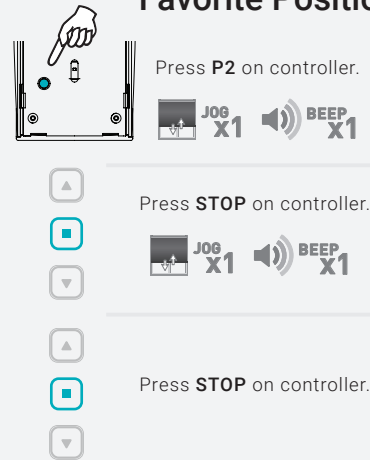


MOTOR RESPONSE



\*Not required for setup

## 6. Set/Delete A Favorite Position

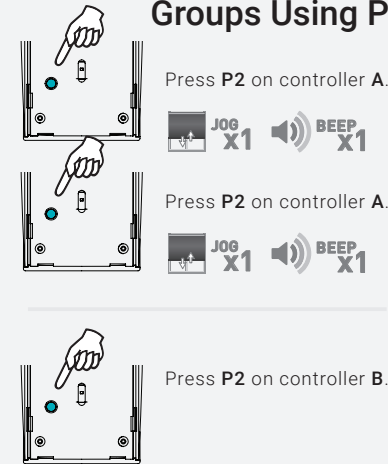


MOTOR RESPONSE



\*Not required for setup

## 7. Create/Delete Groups Using P2

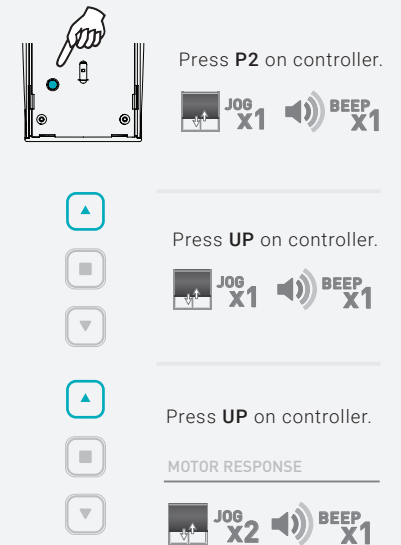


MOTOR RESPONSE



\*Not required for setup

## 8. Adjust Motor Speed

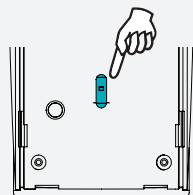


MOTOR RESPONSE

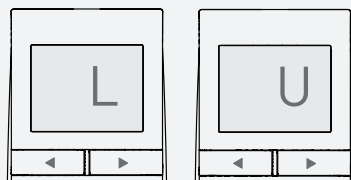


\*Not required for setup

## 9. Lock Remote



To switch modes, push switch to **LOCK** or **UNLOCK** position.



LCD displays "L" when locked.

LCD displays "U" when unlocked.

\*Not required for setup

## 10. Hide Channels



Press and hold both channel scroll buttons together until 15 appears on the screen.

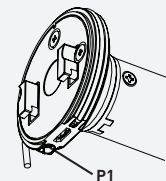


scroll with the left arrow from ch 15 until you reach the last channel that you want to see (example 5) confirm by pressing stop Ch 1 -5 will only be visible



\*Not required for setup

## 11. P1 Functions



The **P1 Button** is utilized to administer motor configurations as described below.

Hold **P1 button** on motor head

ACTIVE PAIRING MODE



SLEEP MODE



REVERSE DIRECTION



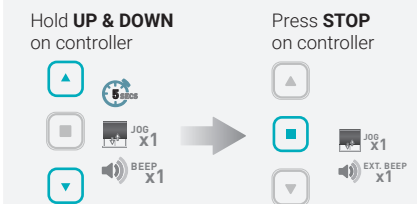
RESET TO FACTORY SETTINGS



\*Not required for setup

## 12. Step Mode

Default motor mode is Roller after initial Limits have been set, use following steps to change to Step Mode.



If motor is in Step Mode, use following steps to change to Roller Mode



\*Not required for setup